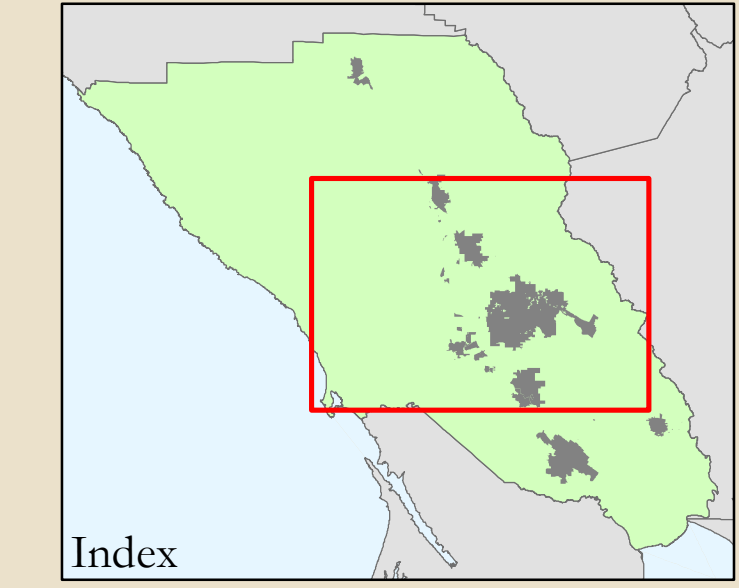
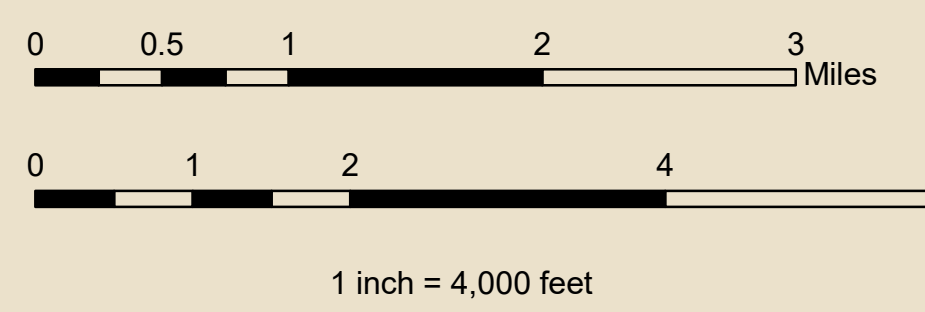
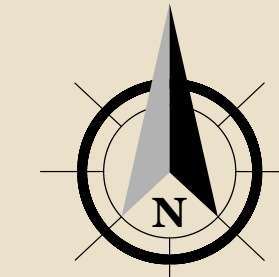


# Sonoma County Fire District Proposed Expansion

DRAFT

Map Produced by: County of Sonoma ISD - GIS Central  
2615 Paulin Dr, Santa Rosa, CA 95403  
(707) 546-3819 or [gis@sonomacounty.gov](mailto:gis@sonomacounty.gov)  
Map Creation Date: 08/07/2019  
Map Revision Date:  
Map Revision Date:

- Sonoma County Fire Department Fire Station
- Other Fire Station
- Cal Fire Fire Station
- County Boundary
- Dispatch City Boundaries
- Sonoma County Fire District
- Other Fire Agency (Aug/Sep Configuration)



Author:  
Sonoma County Fire Department  
Projection and Coordinate System Ties:  
California State Plane Coordinate System, Zone II, NAD 83, US survey  
feet, Lambert Conformal Conic.  
Some data have been re-projected from other coordinate systems and  
may not reflect actual ground positions.  
Document Source and Date:  
\\scofire\isocofd\_rfpd.mxd  
Source:  
Sonoma County ISD/GIS, Sonoma County Public Safety Consortium,  
USGS.

This map is provided as a visual display of County information.  
Reasonable effort has been made to ensure the accuracy of the  
map and data provided; nevertheless, some information may not  
be accurate. The positional accuracy of the data is approximate  
and not intended to represent map accuracy from a published  
record of survey.  
THE MAPS AND ASSOCIATED DATA ARE PROVIDED WITHOUT  
WARRANTY OF ANY KIND,  
either expressed or implied, including but not limited to, the implied  
warranties of merchantability and fitness for a particular purpose.  
Do not make a business decision based on the data before  
validating your decision with the appropriate County agency or  
other government entity.